



COMMISSARIO STRAORDINARIO
RICOSTRUZIONE SISMA - 2016

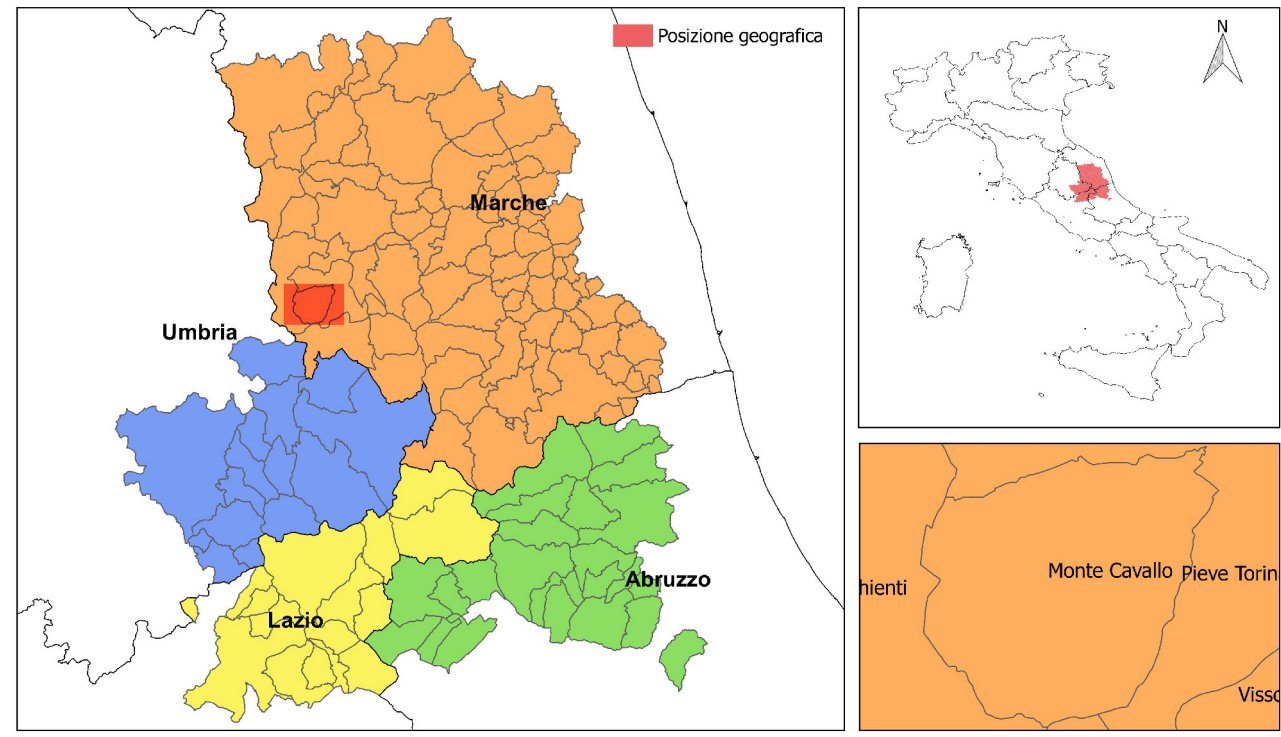
Microzonazione Sismica di Livello 3 del Comune di Monte Cavallo ai sensi
dell'Ordinanza del Commissario Straordinario n. 24 registrata
il 15 maggio 2017 al n. 1065

MICROZONAZIONE SISMICA

Carta delle frequenze naturali dei terreni

scala 1:2.000

Regione Marche
Comune di Monte Cavallo

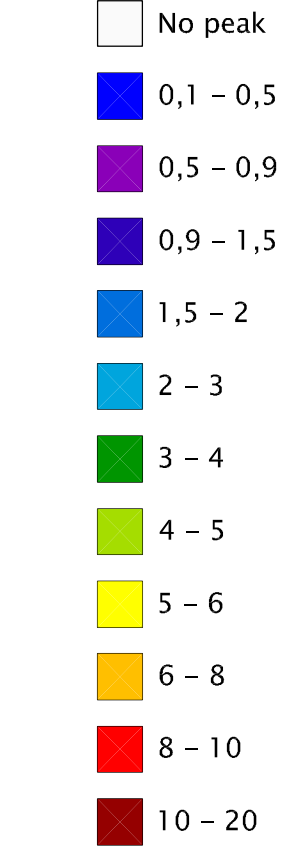


Soggetto realizzatore: CENTROMS
Data e versione: Integrati_06/06_2016

CENTROMS
CENTRO PER LA
MICROZONAZIONE SISMICA
E LE SUE APPLICAZIONI

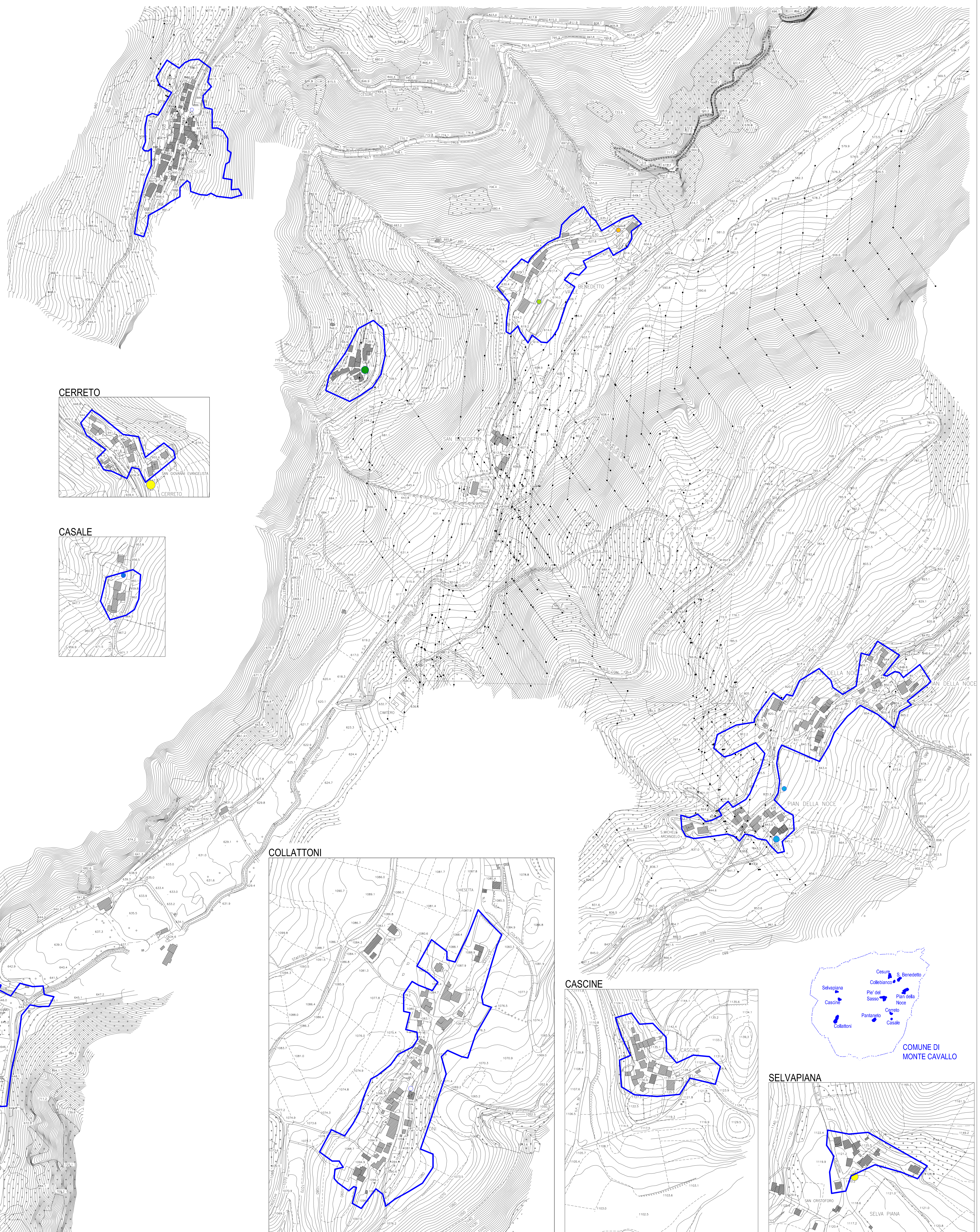
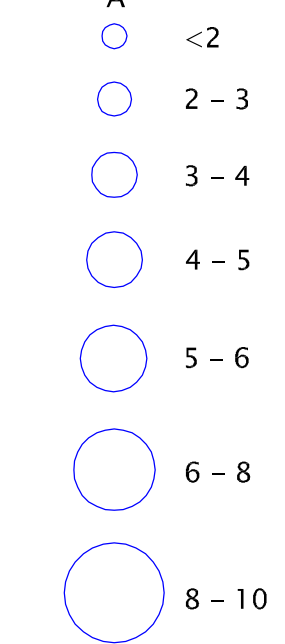
dir. gen. Umberto Lenzi
dir. area prof. Alessandra Lenzi
dir. proj. Giovanni Fusi

Frequenza f (Hz)

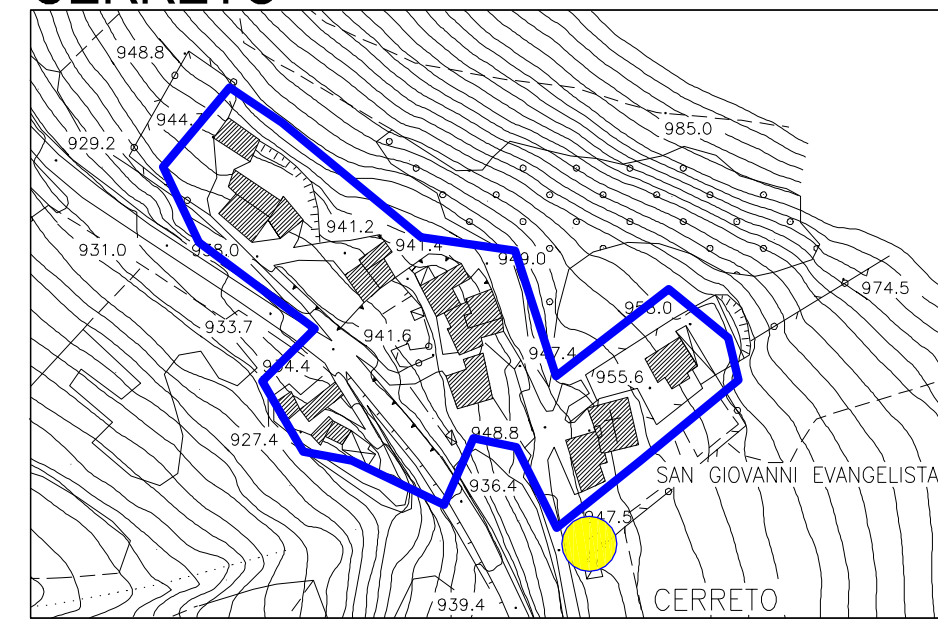


Limite aree MS III livello

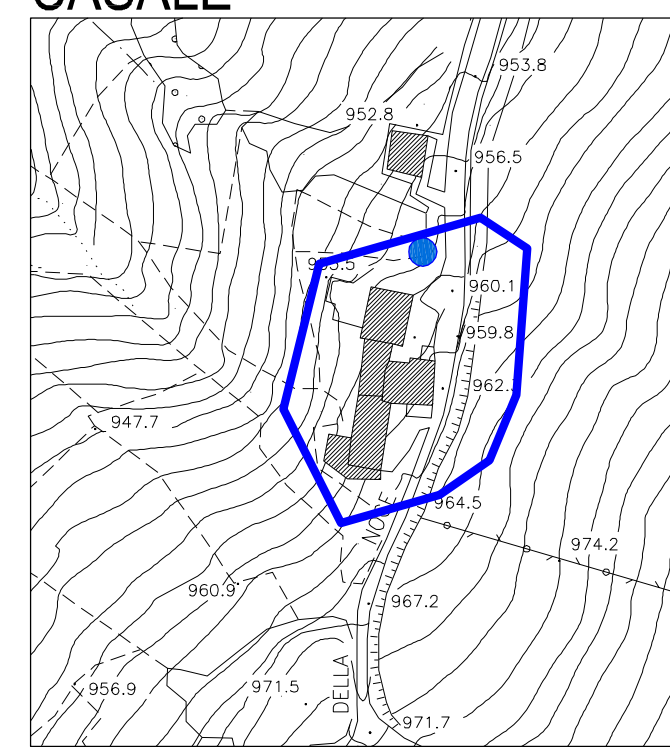
Ampiezza A



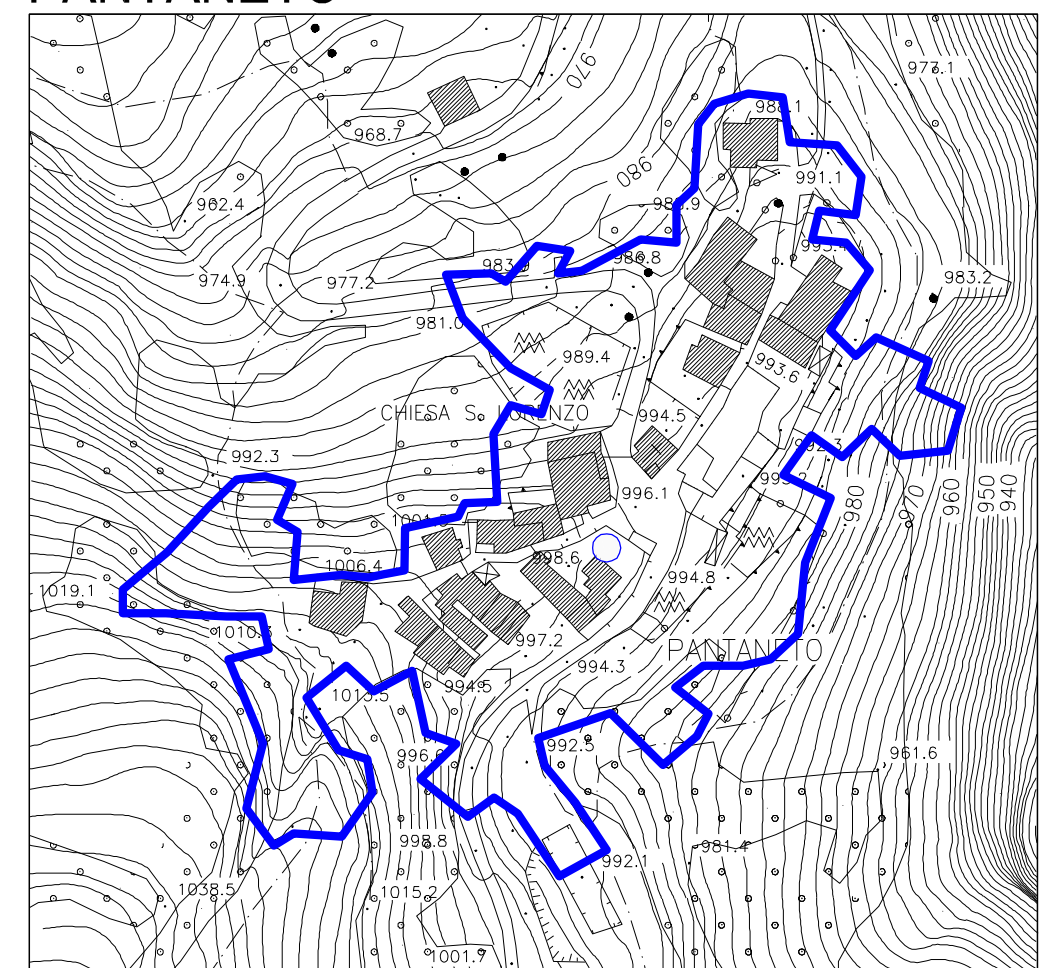
CERRETO



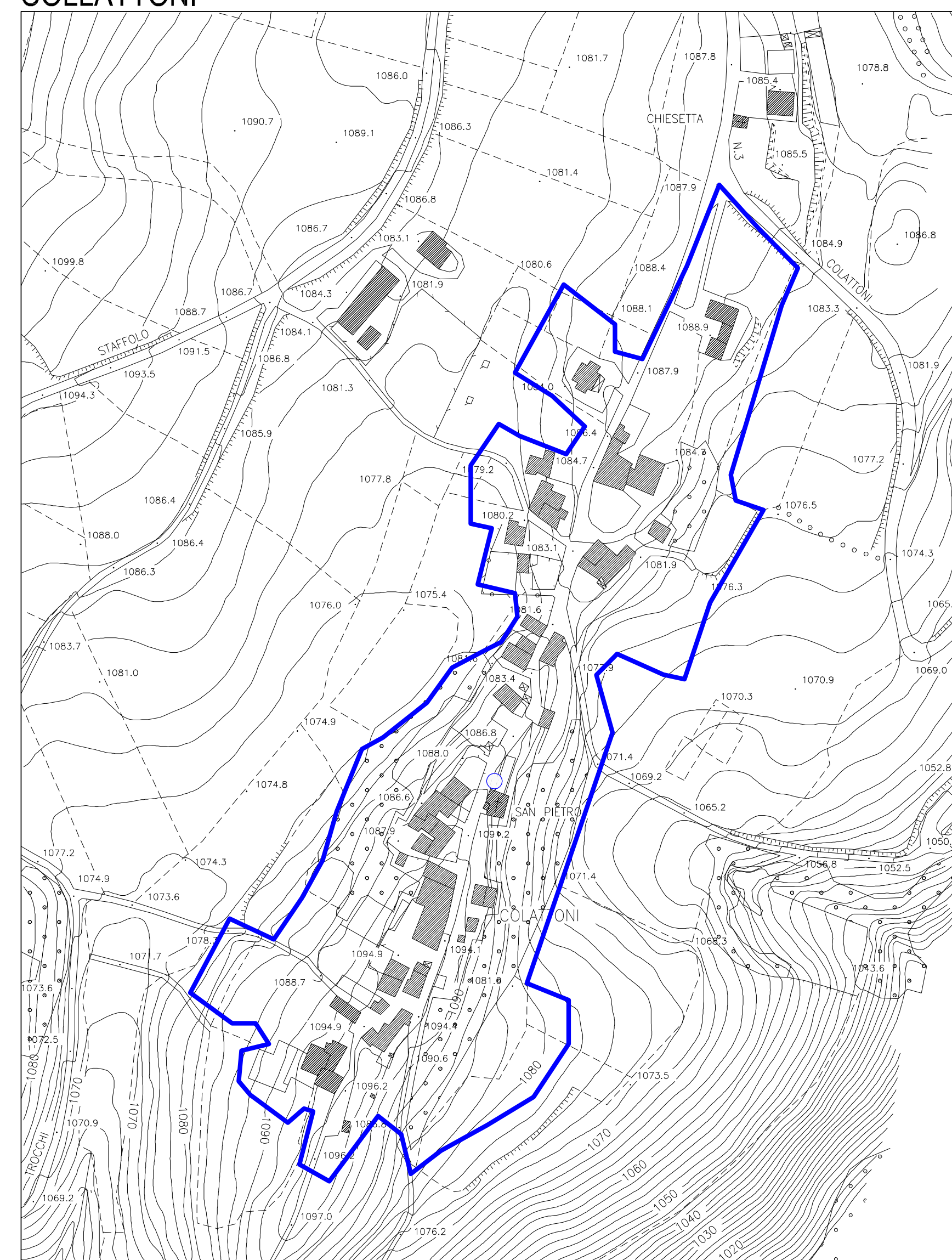
CASALE



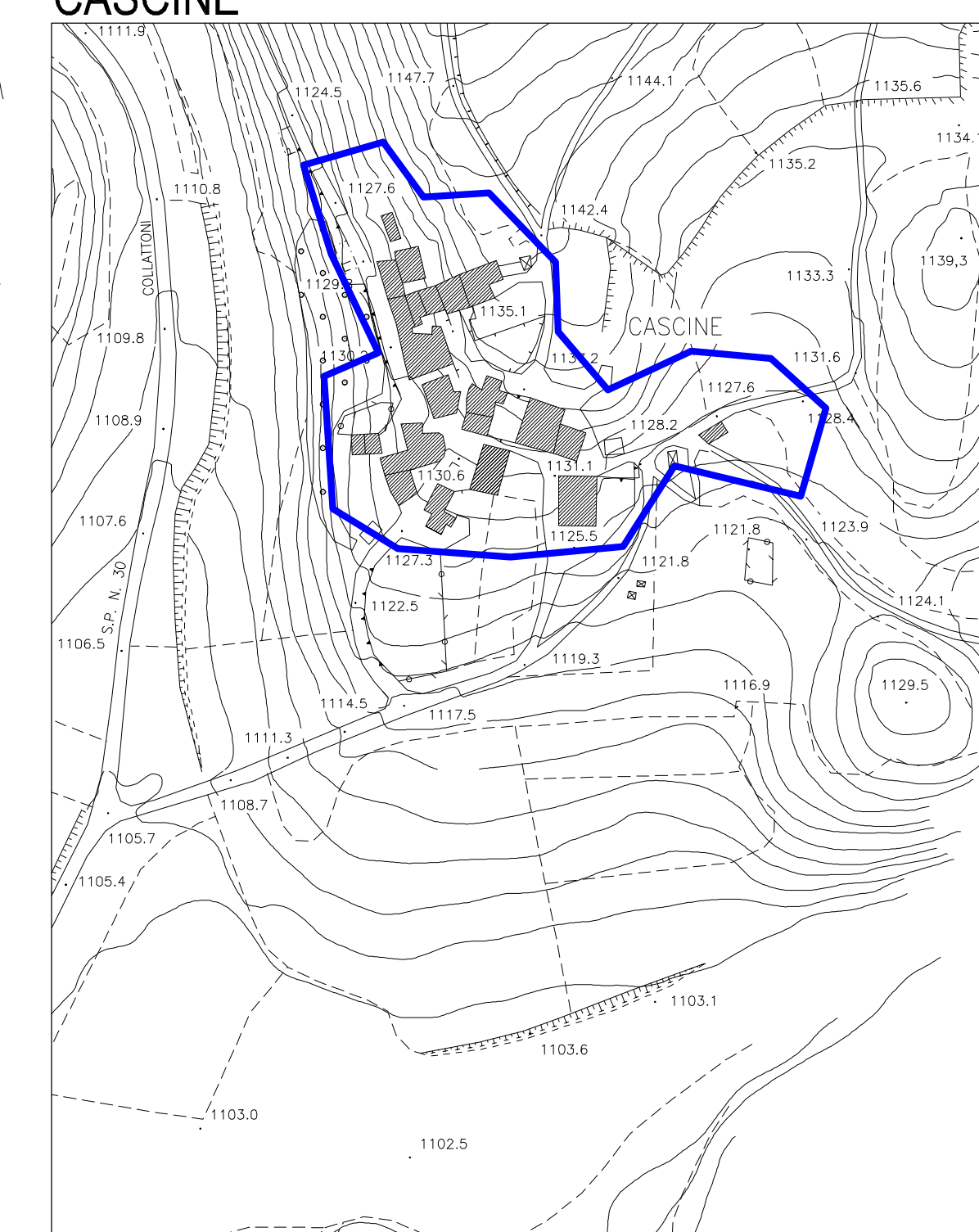
PANTANETO



COLLATTONI



CASCINE



SELVAPIANA

